

**TAKEUCHI**

**TB290-2**

**TB290-2 V**

**Midi excavator with monoblock or 2-piece-boom**



The Takeuchi **TB290-2 (V)** midi-excavator is the perfect all-rounder for all requirements. ECO mode, load-sensing hydraulics and automatic idle make our 9-tonner an extremely economical machine. With adjustable and programmable flow rates with max. 100 l on the first control circuit, the TB290-2 (V) offers maximum flexibility.



- › 1<sup>st</sup> hydraulic circuit, with proportional control with 100 l/min High Flow
- › Rear view camera with automatic display in the multifunction colour display
- › 6 LED worklights for optimum illumination of working area
- › Available in 2 versions: TB290-2 with monobloc boom and TB290-2 V with 2-pc-boom.



For three hours, two days or a whole year - if you need it for your construction site, you can **buy and rent** your TB290-2 (V) from us.

[www.huppenkothén.com](http://www.huppenkothén.com)



# Huppenkothen added-value equipment:

**There is additional equipment that everyone wants.** You therefore get all as standard from Huppenkothen. This makes your excavator more effective, faster and more comfortable.

**Put simply - added value.**

## HYDRAULICS

- 4 hydraulic auxiliary circuits, 3 of which have proportional control
- Flow rates adjustable on the display  
1<sup>st</sup> circuit: 3 memories, 2<sup>nd</sup>/4<sup>th</sup> circuit: 1 memory
- 1<sup>st</sup> hydraulic auxiliary circuit, with proportional control - max. 100 l/min
- 2<sup>nd</sup> hydraulic auxiliary circuit, with proportional control - max. 60,6 l/min
- 3<sup>rd</sup> hydraulic auxiliary circuit, for hydraulic quick change plate HUPPPlate H
- 4<sup>th</sup> hydraulic auxiliary circuit, with proportional control - max. 60,6 l/min
- Detent Mode - breaker line continuous operation
- Auto-Tank - depressurised return flow for breaker operation
- Automatic pressure relief of control circuits when quick change plate is actuated
- Power-controlled load-sensing pump - for more efficiency
- Hydraulic tank ventilation
- Pilot-opened load-holding valve on boom cylinder and arm cylinder (TB290-2 V: also 2-piece-boom)
- End position damping at boom, arm and swing cylinder

## CAB WITH COMFORT EQUIPMENT

- Comfort cabin including roof guard ROPS(ISO12117-2)/OPG(ISO10262 Level I) / FOPS (ISO10262 Level II)
- 5,7" multifunction color display
- Electronically controlled air conditioning with 4 outlet nozzles
- Cupholder with cooling mode
- Radio Bluetooth with USB
- Air suspension comfort seat with seat heating
- HFM(HUPPIFleetManagement) –telematics system with 2 year term of use, extended for additional charge
- ECOMode - to increase economic efficiency
- Automatic idle speed control - optimised fuel consumption
- Sun shield and rain guard

## TECHNICAL AND SAFETY EQUIPMENT

- Double air filter - additional protection for the engine
- Automatic hydraulic track tensioning
- Boom with 2 lifting cylinders (only TB290-2)
- Spring-loaded accumulator on parking brake
- Spring-loaded accumulator on slew brake
- Electric refuelling pump
- Pressure accumulator for pressure relief of hydraulic circuits and emergency boom lowering
- Storage compartment with on-board toolkit
- Acoustic overload warning device (EN474-5)



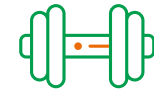
Exclusive additional equipment



Powerful



Efficient



Adjustable powerhouse

Rear view camera - for more safety

LEDworklights

2 x cab at front, 2 x cab at rear, 1 x engine hood at front, 1 x boom

Socket on cab roof for rotary beacon

Optional additional equipment and services



### HUPPLub

Huppenkothen central lubrication system to ensure everything runs even more smoothly.

### HUPPView

Bucket position control system for precise work.

### HUPPLevel

Automated levelling and planing. /

### HUPPIWarranty

Extended premium warranty package with all-round protection. /

### HUPPIFleetManagement

An eye on every machine at all times with fleet management. First 2 years included in purchase price.



MAIN DIMENSIONS	TB290-2	TB290-2 V
Service weight* (kg)	8.820	9.160
Total width (mm)	2.200	2.200
Overall height (mm)	2.550	2.550
Transport length - dozer blade at the rear (mm)	7.000	7.210
Digging depth (mm)	4.410	4.480
Reach (mm)	7.275	7.775
Arm length (mm)	1.960	2.130
Tail swing radius (mm)	1.650	1.685
Tracks	Rubber	Rubber
Track width (mm)	450	450
Ground contact (mm)	2.210	2.210
Ground pressure (kg/cm <sup>2</sup> )	0,376	0,39
Ground clearance (mm)	370	370
Dozer blade dimensions (mm)	2.200 x 500	2.200 x 500

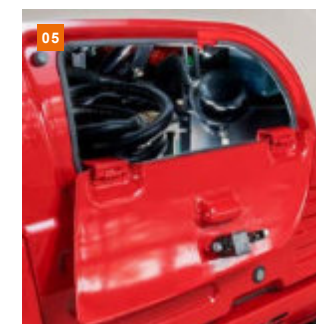
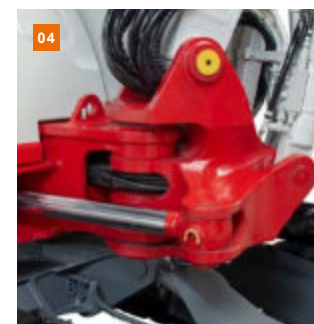
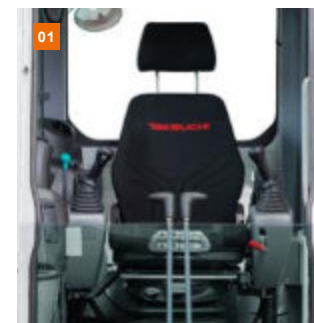
\* Machine weight +PT +HUPPPlate +medium size bucket +half atank of diesel

ENGINE	
Type	YANMAR4TNV98CT 4-cylinder Commonrail diesel engine, turbocharger, Stage Vermission level
Exhaust aftertreatment	DPF and DOC
Rated output ISO14396 (kW)	51,6 kW @2.000 r.p.m.
Displacement (cm <sup>3</sup> )	3.318
Fuel tank (l)	128

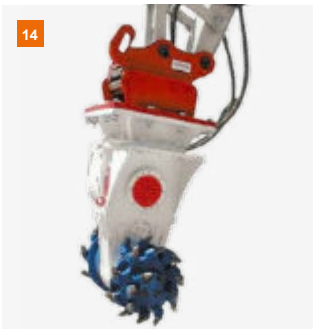
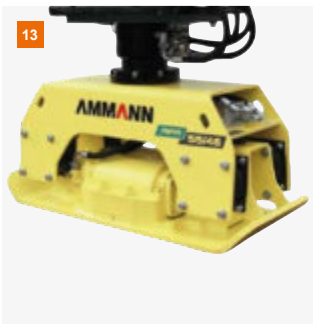
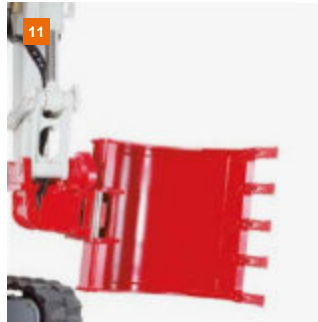
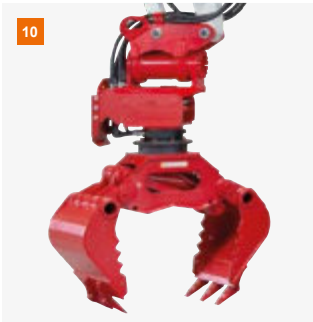
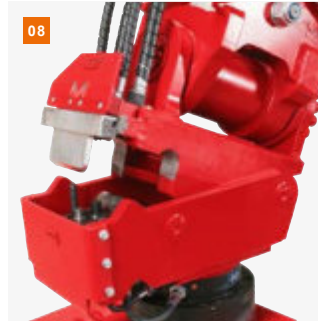
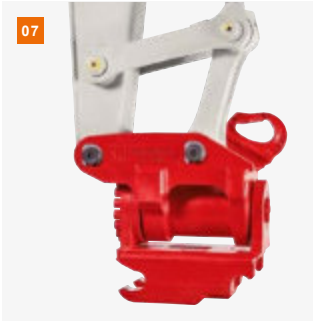
WORK PERFORMANCE	
Travel speed (km/h)	2,6 (1 <sup>st</sup> gear)/ 5 (2 <sup>nd</sup> gear)
Slew speed (rpm)	10,3
Gradeability (degrees/%)	35 / 70
Boom swing angle l/r (°)	70  60
Digging force bucket (kN)	59,1
Digging force arm (kN)	TB290-2: 37,9 / TB290-2 V: 40
Digging force boom (kN)	46,2

HYDRAULIC SYSTEM	
Hydraulic pumps	1 x power-regulated load sensing pump + 2 x gear pump
Pump pressure (bar)	275 x 240 x 35
Flow rate (l/min)	224 x 60,6 x 16
Hydraulic tank (l)	73 (Tank)/ 140 (total)
Slew motor type	Axial piston motor, rigid
Travel motor type	Axial piston motor, variable

AUXILIARY CONTROL CIRCUITS	
1 <sup>st</sup> control circuit hydraulic breaker (l / min) 3 memories for the flow rates	100
2 <sup>nd</sup> /4 <sup>th</sup> control circuit Powertilt / grab (l / min) 1 memory for the flow rate	60,6



- 1 Sound-damped, low-vibration comfort cab with air suspension comfort seat with seat heating. Ergonomic joysticks that swing with the driver's seat.
- 2 Rear view camera - for more safety
- 3 Optimally arranged controls with large, clear and user-friendly display made of tarnish-resistant laminated glass. The rear view camera is displayed automatically.
- 4 Robust boom swing assy with specially protected hose guide and hydraulic boom swing; lifting, arm and swing cylinder with end position damping.
- 5 Lockable refuelling flap for optimum access to refuelling pump and tank cap.
- 6 Generous maintenance hatches for optimum accessibility to hydraulic and fuel maintenance components, battery and radiator cleaning.



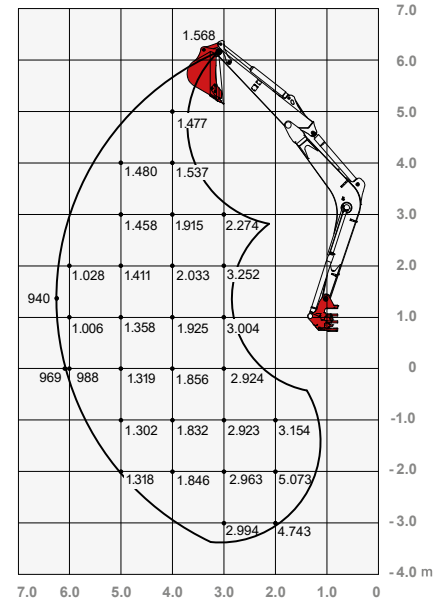
- 7** HUPPTilt tilt device with hydraulic quick change plate HUPPPlate H
- 8** HUPPQuick quick coupling system: Hydraulic connections are connected automatically during the quick coupling process
- 9** HUPPBreak hydraulic breaker 402 with HUPPQuick
- 10** HUPPGrip universal grabber UG08 II with HUPPTilt and HUPPQuick quick coupling system
- 11** HUPPTilt with HUPPPlate H, digging bucket mounted as high bucket
- 12** Concrete buster - Epiroc CB750
- 13** Add-on compactor - Ammann APA55/46
- 14** Drum Cutter - Epiroc ER250



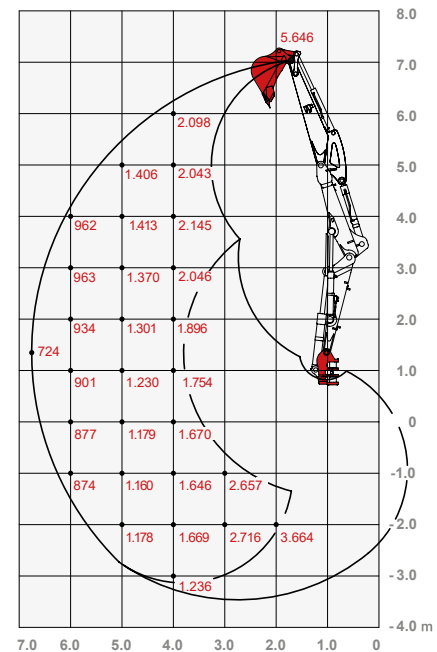
More accessories at  
[huppenkothen.com/  
 excavator-accessories](http://huppenkothen.com/excavator-accessories)

### Lifting load (kg)

Monoblock (forward, upper dozer blade)

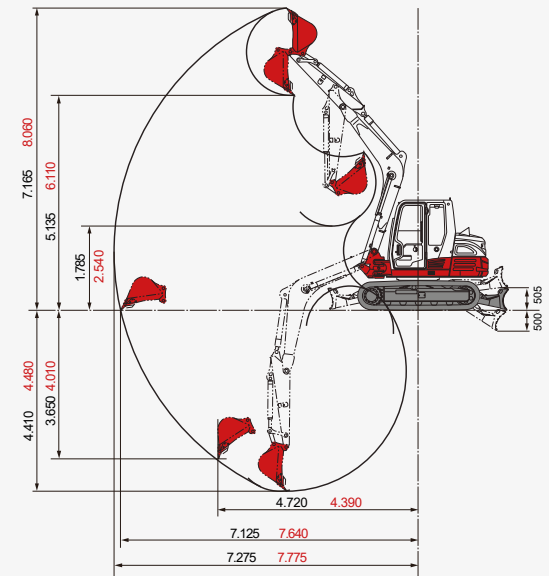
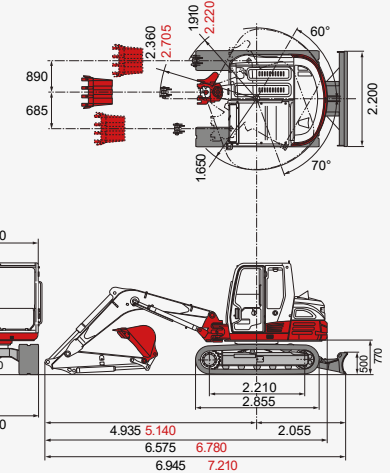


2-piece-boom (forward, upper dozer blade)



### Dimensions (mm)

**Black:** monoblock and 2-piece-boom  
**Red:** alternative dimensions 2-piece-boom



The loads in the diagrams (on the left) are within 87% of the hydraulic lifting load and within 75% of the tipping load.

## Huppenkothen – your construction site, your partner, your success!

If you're looking to buy or rent a construction machine, if quality is important to you and you have no time to lose, then you've come to the right place with Huppenkothen. We provide all you need for your construction site. If you have any questions:

**We are always available.**

**41**

Locations

**350**

Employees

**4.500+**

Machines

**100 %**

Service



### Poštová adresa:

Hutnícka 3418/3  
052 01 Spišská Nová Ves

### Doručovacia adresa:

Markušovská cesta 1  
052 01 Spišská Nová Ves

[info@bagrespis.sk](mailto:info@bagrespis.sk) | [www.bagrespis.sk](http://www.bagrespis.sk)