



TAKEUCHI

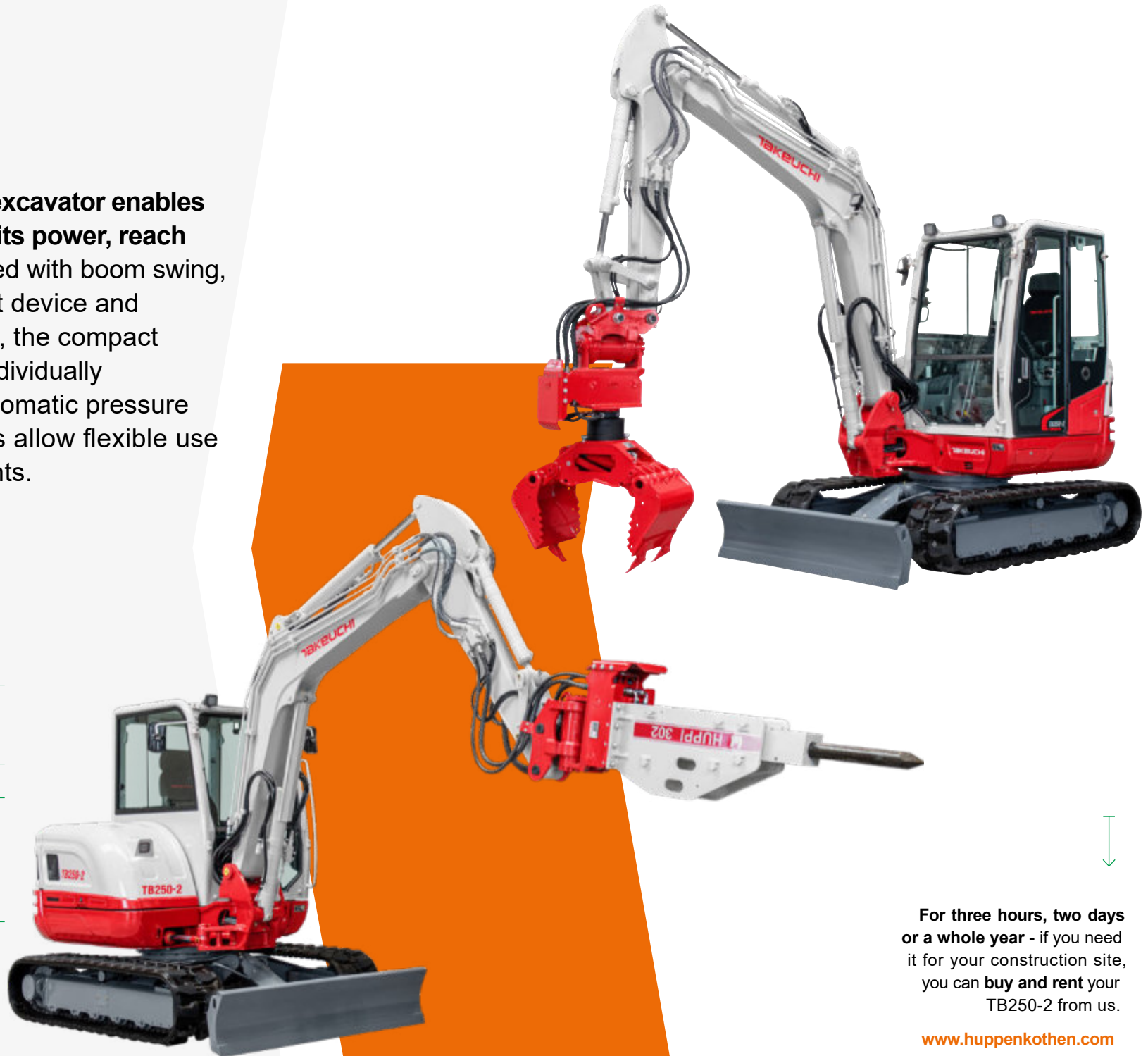
TB250-2

Mini excavator with cabin

The Takeuchi **TB250-2** mini excavator enables maximum productivity with its power, reach and lifting capacity. Equipped with boom swing, in combination with HUPPTilt device and hydraulic quick-change plate, the compact excavator solves any task. Individually adjustable flow rates and automatic pressure relief of the hydraulic circuits allow flexible use of a wide range of attachments.



- › 1st hydraulic circuit, with proportional control with 91,7 l/min
- › 6 LED worklights for optimum illumination of working area
- › Refuelling pump
- › Available in 3 versions: with canopy, with comfort cabin without air-conditioning, with comfort cabin with air-conditioning.



For three hours, two days or a whole year - if you need it for your construction site, you can **buy and rent** your TB250-2 from us.



Huppenkothen added-value equipment:

There is additional equipment that everyone wants. You therefore get all as standard from Huppenkothen. This makes your excavator more effective, faster and more comfortable.

Put simply - added value.



Exclusive additional equipment



Powerful



Spacious and Adjustable comfortable operator cabin



flow rates

|| CAB WITH COMFORT EQUIPMENT

Comfort cabin ROPS (ISO12117-2) / OPG(ISO10262 Level I) / TOPS (ISO12117)

5,7" multifunction color display incl. fuel and temperature indicator

Heating and radio

Air conditioning with 4 outlet nozzles (optional)

Mechanically cushioned comfort seat with headrest

HFM(HUPPIFleetManagement) –telematics system with 2 year term of use, extended for additional charge

ECOMode - to increase economic efficiency

Automatic idle speed control - optimised fuel consumption

Sun shield

|| TECHNICAL AND SAFETY EQUIPMENT

Double air filter - additional protection for the engine

Spring-loaded accumulator on parking brake

Spring-loaded accumulator on slew brake

Electric refuelling pump

Pressure accumulator for pressure relief of hydraulic circuits and emergency boom lowering

Storage compartment with on-board toolkit

Acoustic overload warning device (EN474-5)

LEDworklights

2 x cab at front, 2 x cab at rear, 1 x engine hood at front, 1 x boom

Socket on cab roof for rotary beacon

|| HYDRAULICS

4 hydraulic auxiliary circuits, 3 of which have proportional control

Flow rates adjustable on the display

1st circuit: 3 memories, 2nd/4th circuit: 1 memory

1st hydraulic auxiliary circuit, with proportional control - max. 91,7 l / min

2nd hydraulic auxiliary circuit, with proportional control - max. 38,9 l / min

3rd hydraulic auxiliary circuit, for hydraulic quick change plate HUPPPlate H

4th hydraulic auxiliary circuit, with proportional control - max. 38,9 l / min

Detent Mode - breaker line continuous operation

Auto-Tank - depressurised return flow for breaker operation

Automatic pressure relief of control circuits when quick change plate is actuated

Hydraulic tank ventilation

Pilot-opened load-holding valve on boom cylinder and arm cylinder

End position damping at boom, arm and swing cylinder

Optional additional equipment and services



HUPPLub

Huppenkothen central lubrication system to ensure everything runs even more smoothly.

HUPPView

Bucket position control system for precise work.

HUPPLevel

Automated levelling and planing. /

HUPPIWarranty

Extended premium warranty package with all-round protection.

HUPPIFleetManagement

An eye on every machine at all times with fleet management. First 2 years included in purchase price.



MAIN DIMENSIONS

Service weight* (kg)	5.380
Total width (mm)	1.840
Overall height (mm)	2.555
Transport length - dozer blade at the rear (mm)	5.855
Digging depth (mm)	3.620
Reach (mm)	5.980
Arm length (mm)	1.600
Tail swing radius (mm)	1.360
Tracks	Rubber
Track width (mm)	400
Ground contact (mm)	1.975
Ground pressure (kg/cm ²)	0,29
Ground clearance (mm)	335
Dozer blade dimensions (mm)	1.840 x 430

* Machine weight +PT +HUPPPlate +medium size bucket +half atank of diesel

ENGINE

Type	Yanmar 4TNV88C 4-cylinder diesel engine, turbocharger, Stage Vemission level
Exhaust aftertreatment	DPF and DOC
Rated output ISO14396 (kW)	29,1 kW @2.400 r.p.m.
Displacement (cm ³)	2.189
Fuel tank (l)	70

WORK PERFORMANCE

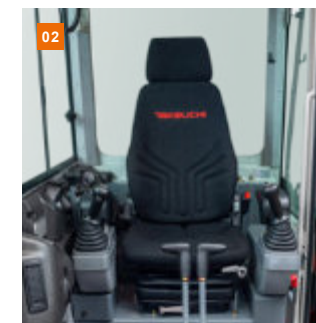
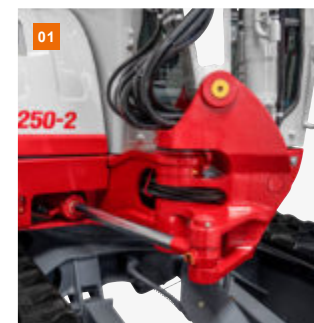
Travel speed (km/h)	2,8 (1 st gear)/ 5,2 (2 nd gear)
Slew speed (rpm)	9,5
Gradeability (degrees/%)	30 / 58
Boom swing angle l/r (°)	70 / 55
Digging force bucket (kN)	37,3
Digging force arm (kN)	24,8
Digging force boom (kN)	26,5

HYDRAULIC SYSTEM

Hydraulic pumps	2 x variable axial piston pump + 2 x gear pump
Pump pressure (bar)	240 x 240 x 206 x 34
Flow rate (l/min)	52,8 x 52,8 x 38,9 x 10,8
Hydraulic tank (l)	45 (tank)/ 95 (total)
Slew motor type	Axial piston motor, rigid
Travel motor type	Axial piston motor, variable

AUXILIARY CONTROL CIRCUITS

1 st control circuit hydraulic breaker (l / min) adjustable flow rate 3memories for the flow rates	91,7
2 nd /4 th control circuit Powertilt / grab (l / min) adjustable flow rate 1memory for the flow rate	38,9



1 Robust boom swing assy with specially protected hose guide and hydraulic boom swing; lifting and swing cylinder with end position damping.

2 Sound-damped, low-vibration comfort cab with mechanically cushioned comfort seat.

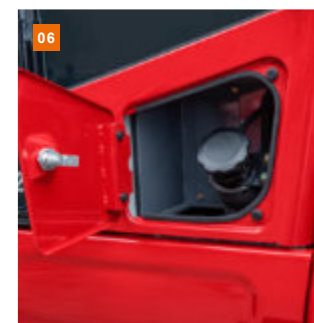
3 Optimally arranged controls and a clear display with

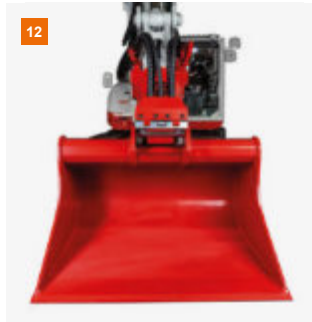
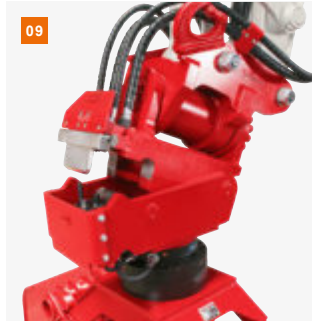
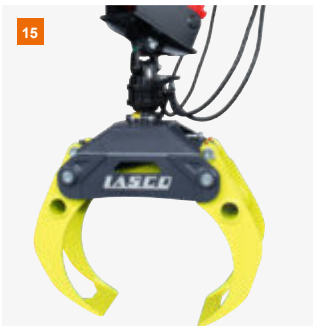
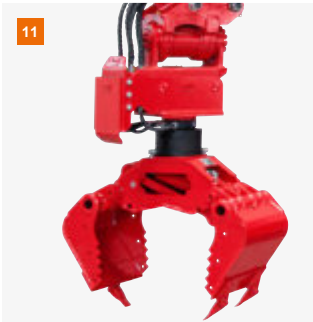
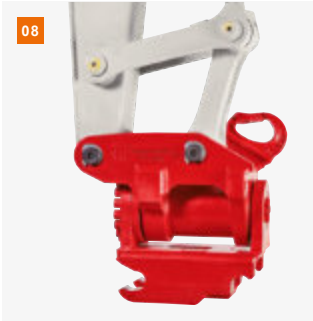
04 visual and acoustic monitoring units. ECOMode to increase economy and reduce diesel consumption.

5 Generous maintenance hatches for optimum accessibility to hydraulic and fuel maintenance components, battery and radiator.

6 Lockable refuelling flap

7 Track rollers with inner and outer guide for safe rubber track running. Double short-pitch rubber tracks for low-vibration driving.





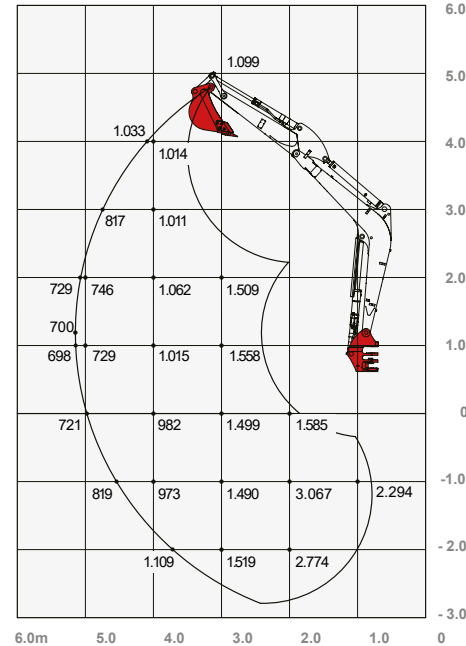
- 8 HUPPTilt tilt device with hydraulic quick change plate HUPPPlate H
- 9 HUPPQuick quick coupling system: Hydraulic connections are connected automatically during the quick coupling process
- 10 HUPPBreak hydraulic breaker 302 with HUPPQuick
- 11 HUPPGrip universal grabber UG05-II with HUPPTilt
- 12 HUPPTilt with HUPPPlate H, digging bucket can be mounted as high bucket
- 13 Earth drill - 4500 - MAX
- 14 Add-on compactor - Ammann - APA20/30
- 15 Wood grapple - Lasco LA1200HZ



More accessories at
[huppenkothen.com/
excavator-accessories](http://huppenkothen.com/excavator-accessories)

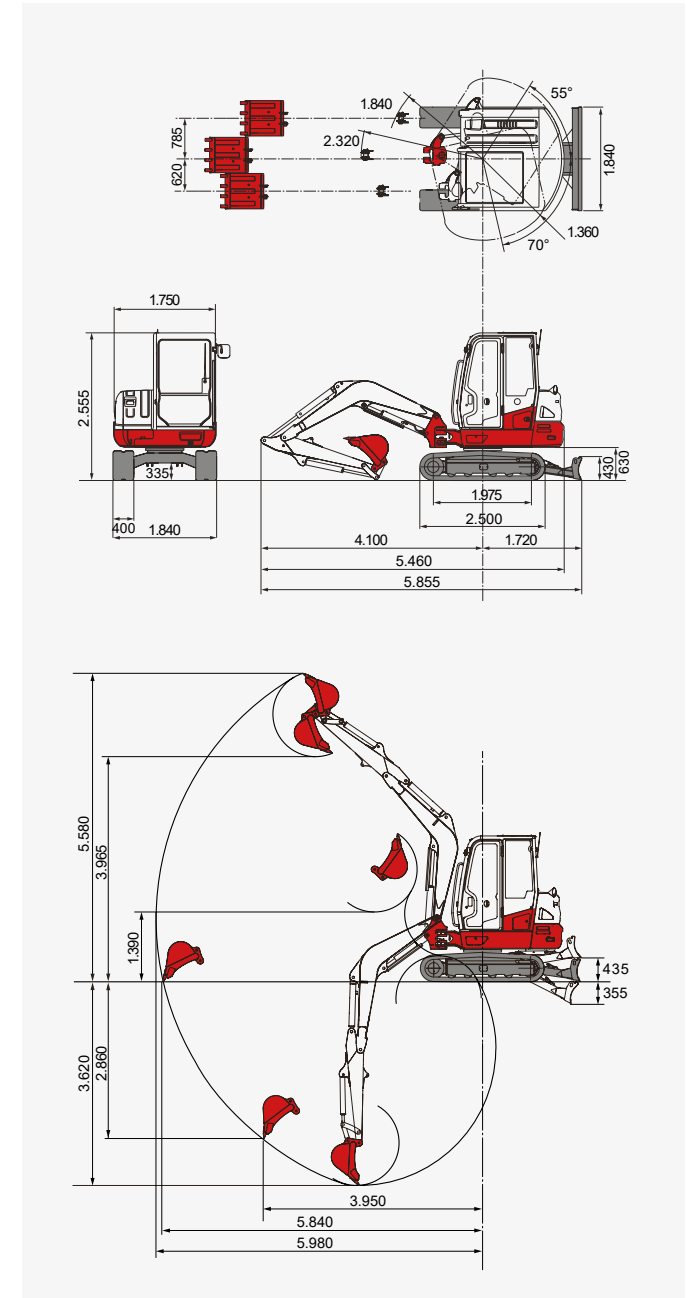
Lifting load (kg) TB250-2 cabin

Forward (upper dozer blade)



The loads in the diagram are within 87% of the hydraulic lifting load and within 75% of the tipping load.

Dimensions (mm) TB250-2 cabin



Huppenkothen – your construction site, your partner, your success!

If you're looking to buy or rent a construction machine, if quality is important to you and you have no time to lose, then you've come to the right place with Huppenkothen. We provide all you need for your construction site. If you have any questions:

We are always available.

41

Locations

350

Employees

4.500+

Machines

100 %

Service



Poštová adresa:

Hutnícka 3418/3
052 01 Spišská Nová Ves

Doručovacia adresa:

Markušovská cesta 1
052 01 Spišská Nová Ves

info@bagrespis.sk | www.bagrespis.sk